

Keys to Quality

Unlocking Your Professional Development

CONFERENCE

Unlocking Your Potential, Opening Up Possibilities

JUNE
22, 2024
8:30AM- 4:00PM

GREAT BAY COMMUNITY COLLEGE

320 CORPORATE DRIVE
PORTSMOUTH, NH 03801

TICKET PRICE: \$30
TICKET WITH LUNCH: \$42

REGISTER ON EVENTBRITE



KEYNOTE SPEAKER

JEANINE K. FITZGERALD
SPEAKER, CONSULTANT AND MASTER TRAINER



Child Care Aware of NH

Unlocking Your Professional Development

Conference Schedule

8:00-8:30 - Registration

8:30-9:45 - Welcome

Address and Keynote

9:45-10:15 - 30 min. Break

Join Dee Dee Thurber for a Mindful Minute

10:15-11:45 - Session 1

11:45-12:45 - Lunch Break

Lunch Box Option Available

Join Dee Dee Thurber for a Joyful Meditation

12:45-2:15 - Session 2

2:15-2:30 - 15 min. Break

2:30-4:00 - Session 3

Pre-registration is **required** for this event. You can click the link [here](#) to view the Eventbrite page:

Or

Scan the QR Code below:

Deadline: Monday, June 17th



Ticket Price: \$30

Ticket Including Lunch: \$42

**NH Cares Scholarship Available
More information on pg. 8*

Child Care Aware of New Hampshire, a program of Southern New Hampshire Services, is pleased to provide this full-day, in-person conference devoted to quality professional development to assist child care programs, early childhood professionals, and administrators in enhancing and improving their practices.

A total of **fourteen (14) training opportunities** will be offered and each one will be categorized for those wishing to take a "Training Track" specific to an area of focus. If you are looking to fulfill the health and safety training required yearly by NH Child Care Program Licensing Rules, or QRIS, make sure to look for those Training Tracks!

Keynote Speaker:

Jeanine K. Fitzgerald



Jeanine draws on more than 45 years of professional experience to empower those who work with and love children to achieve more with those who are "at risk." With experience as a certified teacher and mental health professional she understands the promise of every child, as well as the diversity of their needs.

As a speaker, consultant and master trainer, Jeanine has worked with thousands of children, professionals, and parents across the country. The settings have been varied and included keynote presentations for The Child Welfare League of America, The New England Association for the Education of Young Children, The Northeast Montessori Institute, The Vermont Foster and Adoptive Parent Association, The Children's Trust Fund, The Texas State Association for School Psychologists, and The Family Child Care Association of New York State. In addition, Jeanine has taught at the college level and presented on the campuses of The University of Rhode Island, Bryant University, Northern Vermont University, and The State University System of New York. She is recognized on the federal level as an approved trainer in the fields of education, disabilities, and mental health.

Keynote Address, 8:30-9:45 AM

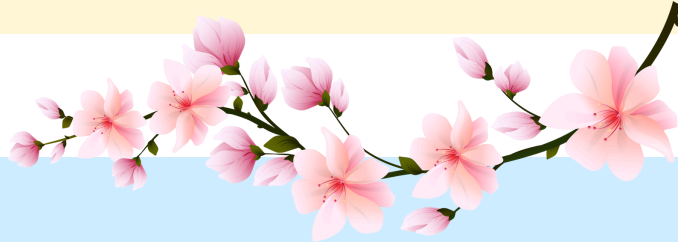
Live Out Loud!

Life is constantly changing and moving in cycles. When adults and children have resources, they can leave behind the destructive cycles of uncertainty and chaos. Transformation is a process and it must be invited into our lives. When ordinary people choose to do extraordinary things, they transform their lives and the lives of others around them. While most have good intentions, life distracts us from what really matters. This keynote explores the concept of “little and often” because that’s what really matters.

Core Knowledge Areas: Developing as a Professional

Trainers: Jeanine K. Fitzgerald, *Certified Human Behavior Consultant and Specialist, and Owner of The Fitzgerald Institute of Lifelong Learning*

Session 1, 10:15-11:45 AM



1A LEADERSHIP/MINDFULNESS Live Joyfully!

Anyone who has ever watched the life cycle of a helium balloon has also seen the full range of the human heart. When lightened, the heart soars, flying above all constraints. When saddened and heavy, it deflates, sinks and bounces along the ground, shrinking to a fraction of its original size. Like any balloon, all it needs is a good dose of helium to get it soaring again. And the best helium for the heart is joy. While life can certainly beat the joy right out of us, play, humor, and laughter are choices. This session explores moving beyond quiet desperation to laughing and playing more. The time to live joyfully starts NOW.

Core Knowledge Areas: Developing as a Professional

Trainers: Jeanine K. Fitzgerald,

1B CURRICULUM/ALL AGES Nature Based Play

Nature is a great teacher. Let’s take a look at why children (and adults) connect to nature and how to bring more nature into daily activities and play. Extending outdoor play can be beneficial for both children and teachers. We will explore how to work with the weather and the resilience that is created when young children experience all kinds of weather.

Core Knowledge Areas: Developing as a Professional, Teaching & Learning, and Promoting Child Growth & Development

Trainers: Dee Dee Thurber, *M.Ed., ECMPWT, Southern NH Services, Child Care Aware of NH*

Session 1, 10:15-11:45 AM



1C LEADERSHIP/SEL *Mind In The Making Overview: Thriving*

Positive relationships with caring adults are essential for brain development. Join us for this informative session and learn how you play a critical role in developing the 7 essential life skills in young children.

Core Knowledge Areas: Developing as a Professional, and Promoting Child Growth & Development

Trainers: Julie Choiniere, BS, ECMPWT

1D HEALTH/SAFETY/WELLNESS *Understanding Homelessness and Its Impacts on Children and Families*

Participants in this training will understand the general state of homelessness in NH. This includes how to identify a child and/or family experiencing homelessness and the relationship between homelessness and trauma in children, the physical and emotional impacts of homelessness, particularly on children, the reactions and symptoms of trauma and homelessness in children, and best practices in serving children who experience homelessness. This training will incorporate a variety of teaching techniques including didactic presentation, small group discussions/brainstorms, videos, and opportunities for questions, dialogue, and discussion.

Core Knowledge Areas: Developing as a Professional and Building Family & Community Relationships

Trainers: Courtney Porter, MSW, M.Ed., LSSW, School Social Worker

1E CCLU/HEALTH/SAFETY/WELLNESS *CARE Training*

CCLU Licensing Chief, Melissa Clement & Licensing Coordinator, Christine Conlon, will share data on frequently cited rules, offer clarity on those rules, and provide tips for compliance, as well as answer your questions.

Core Knowledge Areas: Developing as a Professional, and Promoting Child Growth & Development

Trainers: Melissa Clement, NH CCLU, Licensing Chief, Christine Conlon, NH CCLU, Licensing Coordinator

lunch break

Session 2, 12:45-2:15 PM

2A

FAMILY ENGAGEMENT/HEALTH/SAFETY/WELLNESS Fostering Genuine Relationships with Families Impacted by Substance Use

This presentation will discuss the science of addiction as a treatable chronic medical condition and ways to enhance communication to engage, empower, and build trusting relationships with families impacted by substance use disorders. Participants will improve their knowledge regarding the science of addiction. Participants will identify strategies to engage with families impacted by substance use.

Core Knowledge Areas: Developing as a Professional, and Building Family & Community Relationships

Trainers: Kate Olivia Stokes, RN, BSN, MPH, Meagan Adams, CHW, RSW, Haley Martell, RSW, Amy Brooks, M.Ed.

2B

CURRICULUM/ALL AGES All About Play Schemas

During this training, we will learn all about play schemas - what are they? Why are they important? We will discuss the levels of play schemas and learn about the most common schemas that develop during the early childhood years. When you were younger, do you remember repeating patterns in your play? Participants will share what their experience was growing up.

Core Knowledge Areas: Developing as a Professional, Teaching and Learning, Promoting Child Growth and Development, and Observing, Documenting, and Assessing

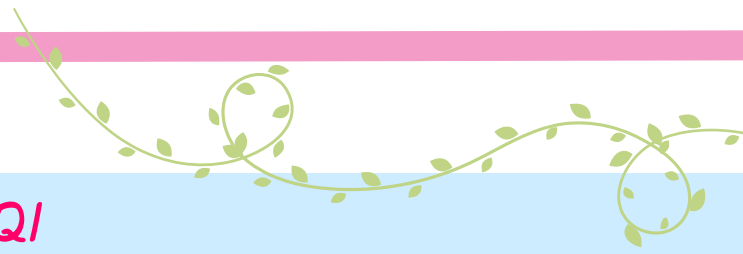
Trainers: Dee Dee Thurber, M.Ed., ECMPWT, Southern NH Services, Child Care Aware of NH



This conference will award participants up to **six (6)** hours of **professional development**, including a welcome address and networking time. Please note once the conference is complete, proof of attendance for NH Child Care Providers will be found through your **NHCIS training tile** under completed training. As this is a large conference, please allow 5 business days. If you are not a NH Child Care Provider and require proof of attendance, please let us know and we can arrange a Certificate of Attendance for you.

***Please note:** All our trainers are either credentialed through the NH Early Childhood Professional Development System or have a degree or background that qualifies them to provide training that is accepted by NH's Child Care Licensing Unit and/or for credentialing purposes. For more information on credentialing, visit <https://www.nh-connections.org/providers/credentialing/>

Session 2, 12:45-2:15 PM



2C LEADERSHIP/QRIS/GSQ/CQI *Blueprints for Success: Career Planning in Early Childhood*

Are you struggling to achieve your career goals in the early childhood field? Join us for a planning session to learn how to create a roadmap to success! Discover how the Department of Labor (DOL) Early Childhood Apprenticeship Program and T.E.A.C.H. NH Scholarship can help you achieve your goals. Additionally, explore other financial resources that are available for those who want to further their careers in early childhood education. Learn about what doors a Child Development Associate (CDA) or degree in early childhood can open and the resources available to help you.

Core Knowledge Areas: Developing as a Professional

Trainers: Jennifer Ganim-Smith, *M.Ed., ECMPWT*,
Amanda Enos, *ECAP & TEACH Support Coordinator*

2D PRESCHOOL/LITERACY *From Princesses to Pirates*

Set a course for an enchanted workshop where participants learn how to create their own folktale, fairy tale or fable. Participants will learn the importance of storytelling ethics and how to research a story at their local library. Everyone will be educated, and entertained and engaged while learning how to do sound effects and character voices that helps bring stories to life. Participants will learn amazing and fun theater games to get ready to tell their own stories... and much more!

Core Knowledge Areas: Developing as a Professional, Teaching & Learning, and Promoting Child Growth & Development

Trainers: Shawn Middleton, *ECPDST*

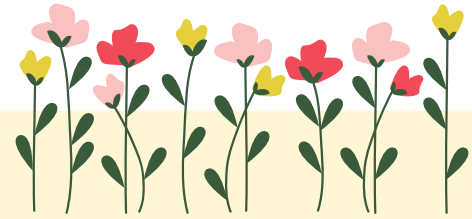
2E INFANT/TODDLER/SEL *The Gifts of Challenging Behavior*

This session will transform our reactions to biting, tantrums, and other typical infant and toddler expressions by valuing their attempts to communicate. This training is going to examine the adult role in promoting appropriate communication with our youngest learners and support the development of teacher reflection and meaningful responses. Come join us to learn more about this topic and gain insight on how to better help the children in your care!

Core Knowledge Areas: Developing as a Professional, Teaching & Learning, and Promoting Child Growth & Development

Trainers: Stephanie Therrien, *M.Ed, ECMPWTPC*

Session 3, 2:30-4:00 PM



3A INFANT/TODDLER/MINDFULNESS *Feeling, Function, Fulfillment!*

Diapers are all changed, everyone is fed, and all of the daily notes are caught up! Let's dive into the function of your day, how you are feeling, and best of all, finding fulfillment in your working hours. Join me for a personalized deep dive into finding your flow and satisfying feelings while working with infants and toddlers.

Core Knowledge Areas: Developing as a Professional, Teaching & Learning, and Promoting Child Growth & Development

Trainers: Bekah Kistler, *ECPDST*

3B HEALTH/SAFETY/WELLNESS *Ticks in New Hampshire Identification and Prevention for Care Givers*

Participants who attend this training will understand how to identify ticks and protect themselves from being fed upon. Care givers and others will be introduced to core concepts in tick identification, tick habitat identification, tick morphology, life cycles and biology, and important strategies for reducing the risks associated with ticks for themselves and those in their care.

Core Knowledge Areas: Developing as a Professional, Teaching & Learning, and Promoting Child Growth & Development

Trainers: Rachel Maccini, *Field Specialist, UNH Cooperative Extension, Food and Agriculture, Pesticide Safety and Entomologist. M.S. Ed.*

3C LEADERSHIP/STAFF RETENTION *Teamwork and the 3 C's: Culture, Communication, and Collaboration*

Join us for an engaging training session and discussion focusing on teamwork within your childcare program. We'll delve into the vital aspects of culture, communication, and collaboration within your organization through a dynamic presentation. Led by Katelynn, this session will blend theory with practical insights, requiring your active participation in a lively discussion on implementing the 3 C's effectively. Together, we'll explore strategies for addressing necessary cultural changes. The ultimate aim of this training is to equip you with the knowledge to enhance your program's culture and minimize turnover.

Core Knowledge Areas: Developing as a Professional

Trainers: Katelynn Karugu, *MBA, ECMPWT*

Session 3, 2:30-4:00 PM



3D *PRESCHOOL/LITERACY* *Interactive Reading Adventure: Igniting A Love for Books*

There are optimum ways to read a book for children's engagement and enjoyment. In this session, we will explore how to select high quality literature for children, how to spark delight, and captivate children's interest when reading books, and discover the benefits of reading books with children.

Core Knowledge Areas: Developing as a Professional, Teaching & Learning, and Promoting Child Growth & Development

Trainers: Stephanie Therrien, M.Ed, ECMPWTPC



The **NH Cares Scholarship** is awarded to New Hampshire child care providers who are currently working 30 hours per week or more in a licensed program. This scholarship will cover the total fee to attend designated Child Care Aware of NH hosted conferences, specials, and training sessions, giving child care providers the benefit to attend and earn professional development hours at no-cost.

To receive the NH Cares Scholarship please send the following information to ccrtraining@snhs.org with the subject line "**NH Cares Scholarship**"

- Name
- Email
- Phone Number
- Place of Employment
- Hours You Work Per Week
- How the NH Cares Scholarship will Benefit You

Child Care Aware of NH

Information to Support Your Day

Lunch Box Choices from Your Local Hannaford Store

Each choice will come with a piece of fruit, chips and a bottle of water.

*Ticket fee
including lunch \$42*

- **Ham Rustica Premium Boxed Lunch**
 - Includes one of our hearty, freshly prepared Rustica deli sandwiches, with fresh seasonal fruit, one of our 4 oz. gourmet cookies and a 2 oz. bag of Kettle Chips.
- **Turkey Rustica Premium Boxed Lunch**
 - Includes one of our hearty, freshly prepared Rustica deli sandwiches, with fresh seasonal fruit, one of our 4 oz. gourmet cookies and a 2 oz. bag of Kettle Chips.
- **Roast Beef Rustica Premium Boxed Lunch**
 - Includes one of our hearty, freshly prepared Rustica deli sandwiches, with fresh seasonal fruit, one of our 4 oz. gourmet cookies and a 2 oz. bag of Kettle Chips.
- **Caprese Rustica Premium Boxed Lunch**
 - Includes a green leaf lettuce, sliced red peppers, vine-ripened tomatoes, pesto sauce, and fresh mozzarella on a ciabatta roll. Served with fresh seasonal fruit, one of our 4 oz. gourmet cookies and a 2 oz. bag of Kettle Chips.

Child Care Aware of New Hampshire would like to acknowledge all of the organizations and groups who collaborated and are contributing to the success of this conference.

Thank you for your support and contributions to promote quality practices in early childhood settings!

- **Southern New Hampshire Services/Child Care Aware Of New Hampshire**
- **Vroom**
- **Early Childhood Apprenticeship Program/Department of Labor**
- **T.E.A.C.H. Early Childhood® New Hampshire**
- **NH Family Voices**
- **Watch Me Grow**
- **NH Department of Health and Human Services**
- **NH Choose Safe Places for Early Care and Education**
- **Let's Learn About Lice**
- **Bureau of Child Development and Head Start Collaboration**
- **NH Division of Public Health Services, Childhood Lead Poisoning Prevention Program**

Contact Us

For more information about our services, visit nh-connections.org or visit our agency site at snhs.org. Check us out on [Facebook](#) and "Like Us" at **Child Care Aware of New Hampshire**. We look forward to seeing you!
Questions? Call Toll Free: 1-855-393-1731, ext. 2532

